



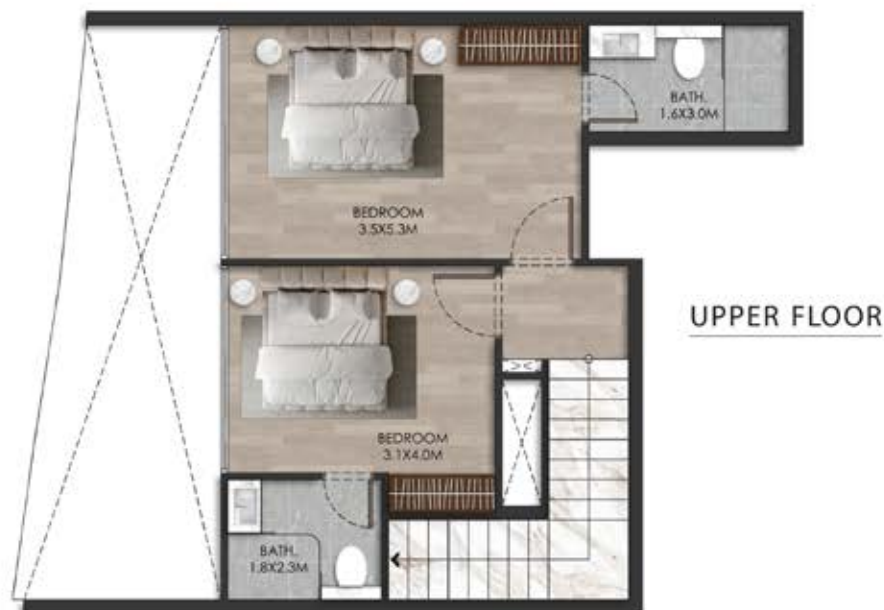
THE BEACH HOUSE

At Al Marjan

Floorplans



Level 1



UNIT - 101	
2 BEDROOM+MAID	
LEVEL-01	
Internal Living Area	1449.04 sq.ft.
Outdoor Living Area	143.16 sq.ft.
Total Living Area	1592.20 sq.ft.



DISCLAIMER:

All measurements are indicative and are for marketing purposes only. All efforts have been made to ensure their accuracy, however these layouts are subject to change at the discretion of the developer and should not be relied upon as final. The actual area may vary from the stated area and the developer reserves the right to make the revisions/alterations, at its absolute discretion, without any liability whatsoever.



UPPER FLOOR

UNIT - 102

1 BEDROOM

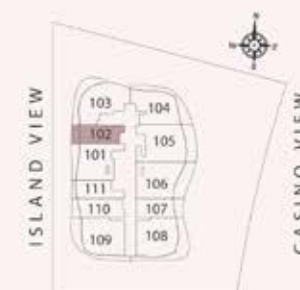
LEVEL-01

Internal Living Area	837.43 sq.ft.
Outdoor Living Area	89.34 sq.ft.
Total Living Area	926.77 sq.ft.

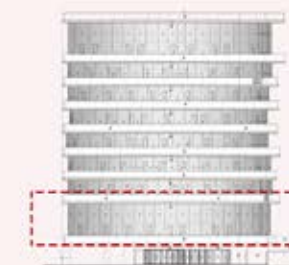


LOWER FLOOR

KEY PLAN



KEY ELEVATION



DISCLAIMER:

All measurements are indicative and are for marketing purposes only. All efforts have been made to ensure their accuracy, however these layouts are subject to change at the discretion of the developer and should not be relied upon as final. The actual area may vary from the stated area and the developer reserves the right to make the revisions/alterations, at its absolute discretion, without any liability whatsoever.



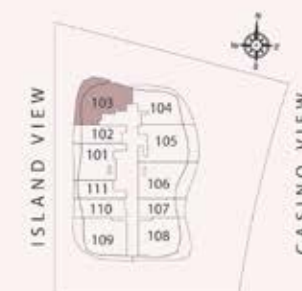
UNIT - 103

3 BEDROOM

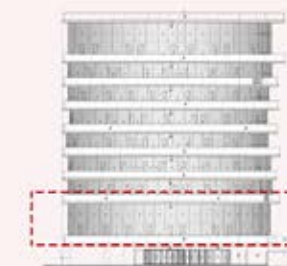
LEVEL-01

Internal Living Area	1746.01 sq.ft.
Outdoor Living Area	270.50 sq.ft.
Total Living Area	2016.51 sq.ft.

KEY PLAN



KEY ELEVATION



DISCLAIMER:

All measurements are indicative and are for marketing purposes only. All efforts have been made to ensure their accuracy, however these layouts are subject to change at the discretion of the developer and should not be relied upon as final. The actual area may vary from the stated area and the developer reserves the right to make the revisions/alterations, at its absolute discretion, without any liability whatsoever.



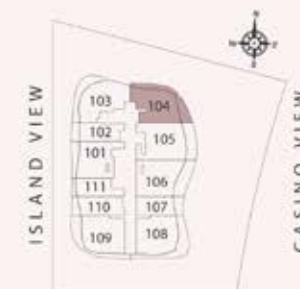
UNIT - 104

3 BEDROOM

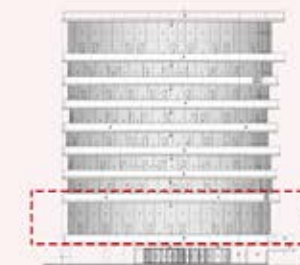
LEVEL-01

Internal Living Area	1559.37 sq.ft.
Outdoor Living Area	281.91 sq.ft.
Total Living Area	1841.27 sq.ft.

KEY PLAN



KEY ELEVATION



DISCLAIMER:

All measurements are indicative and are for marketing purposes only. All efforts have been made to ensure their accuracy, however these layouts are subject to change at the discretion of the developer and should not be relied upon as final. The actual area may vary from the stated area and the developer reserves the right to make the revisions/alterations, at its absolute discretion, without any liability whatsoever.



UPPER FLOOR

UNIT - 105

2 BEDROOM

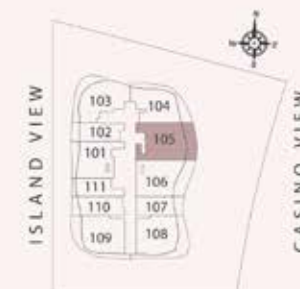
LEVEL-01

Internal Living Area	1763.88 sq.ft.
Outdoor Living Area	244.02 sq.ft.
Total Living Area	2007.90 sq.ft.

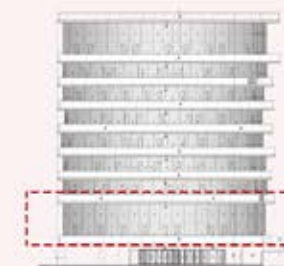


LOWER FLOOR

KEY PLAN

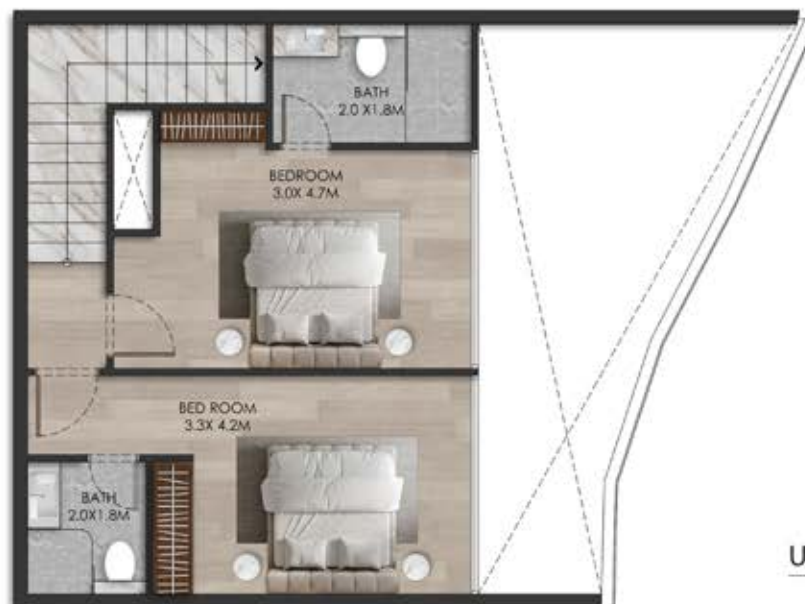


KEY ELEVATION



DISCLAIMER:

All measurements are indicative and are for marketing purposes only. All efforts have been made to ensure their accuracy, however these layouts are subject to change at the discretion of the developer and should not be relied upon as final. The actual area may vary from the stated area and the developer reserves the right to make the revisions/alterations, at its absolute discretion, without any liability whatsoever.



UPPER FLOOR

UNIT - 106
2 BEDROOM+MAID

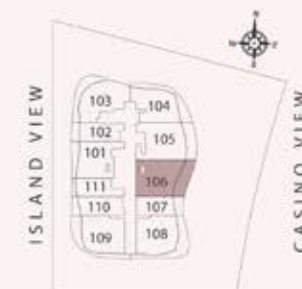
LEVEL-01

Internal Living Area	1589.61 sq.ft.
Outdoor Living Area	276.42 sq.ft.
Total Living Area	1866.03 sq.ft.

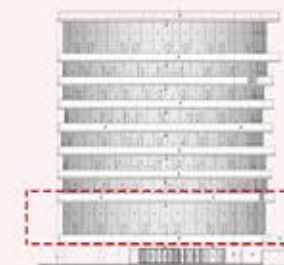


LOWER FLOOR

KEY PLAN



KEY ELEVATION



DISCLAIMER:

All measurements are indicative and are for marketing purposes only. All efforts have been made to ensure their accuracy, however these layouts are subject to change at the discretion of the developer and should not be relied upon as final. The actual area may vary from the stated area and the developer reserves the right to make the revisions/alterations, at its absolute discretion, without any liability whatsoever.



UPPER FLOOR



LOWER FLOOR

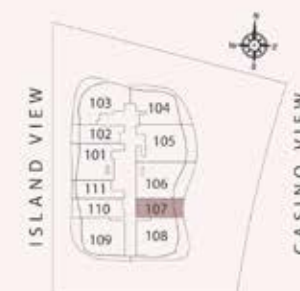
UNIT - 107

1 BEDROOM

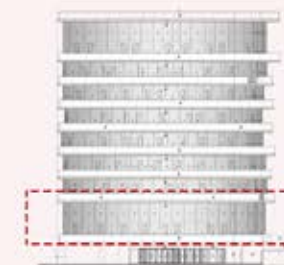
LEVEL-01

Internal Living Area	767.04 sq.ft.
Outdoor Living Area	103.55 sq.ft.
Total Living Area	870.59 sq.ft.

KEY PLAN



KEY ELEVATION



DISCLAIMER:

All measurements are indicative and are for marketing purposes only. All efforts have been made to ensure their accuracy, however these layouts are subject to change at the discretion of the developer and should not be relied upon as final. The actual area may vary from the stated area and the developer reserves the right to make the revisions/alterations, at its absolute discretion, without any liability whatsoever.



UPPER FLOOR



LOWER FLOOR

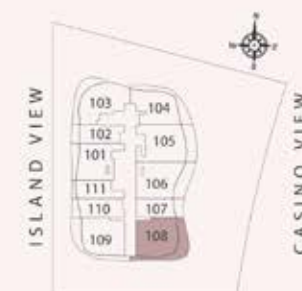
UNIT - 108

3 BEDROOM

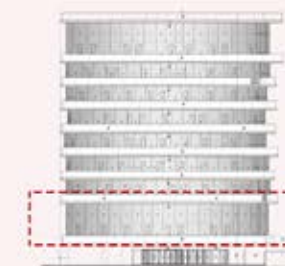
LEVEL-01

Internal Living Area	1727.72 sq.ft.
Outdoor Living Area	378.57 sq.ft.
Total Living Area	2106.28 sq.ft.

KEY PLAN



KEY ELEVATION



DISCLAIMER:

All measurements are indicative and are for marketing purposes only. All efforts have been made to ensure their accuracy, however these layouts are subject to change at the discretion of the developer and should not be relied upon as final. The actual area may vary from the stated area and the developer reserves the right to make the revisions/alterations, at its absolute discretion, without any liability whatsoever.



UNIT - 109

3 BEDROOM

LEVEL-01

Internal Living Area	1721.90 sq.ft.
Outdoor Living Area	307.42 sq.ft.
Total Living Area	2029.32 sq.ft.



DISCLAIMER:

All measurements are indicative and are for marketing purposes only. All efforts have been made to ensure their accuracy, however these layouts are subject to change at the discretion of the developer and should not be relied upon as final. The actual area may vary from the stated area and the developer reserves the right to make the revisions/alterations, at its absolute discretion, without any liability whatsoever.



UPPER FLOOR



UNIT - 110

1 BEDROOM

LEVEL-01

Internal Living Area	852.72 sq.ft.
Outdoor Living Area	83.10 sq.ft.
Total Living Area	935.81 sq.ft.



LOWER FLOOR

DISCLAIMER:

All measurements are indicative and are for marketing purposes only. All efforts have been made to ensure their accuracy, however these layouts are subject to change at the discretion of the developer and should not be relied upon as final. The actual area may vary from the stated area and the developer reserves the right to make the revisions/alterations, at its absolute discretion, without any liability whatsoever.



UPPER FLOOR

UNIT - 111

1 BEDROOM

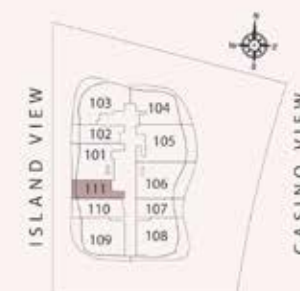
LEVEL-01

Internal Living Area	820.32 sq.ft.
Outdoor Living Area	46.07 sq.ft.
Total Living Area	866.39 sq.ft.

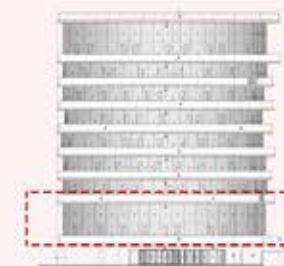


LOWER FLOOR

KEY PLAN



KEY ELEVATION



DISCLAIMER:

All measurements are indicative and are for marketing purposes only. All efforts have been made to ensure their accuracy, however these layouts are subject to change at the discretion of the developer and should not be relied upon as final. The actual area may vary from the stated area and the developer reserves the right to make the revisions/alterations, at its absolute discretion, without any liability whatsoever.

Level 3



UNIT - 301

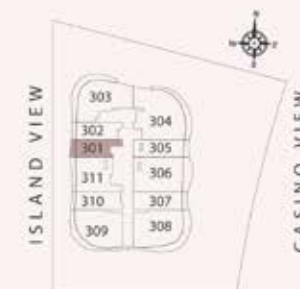
STUDIO

LEVEL-03

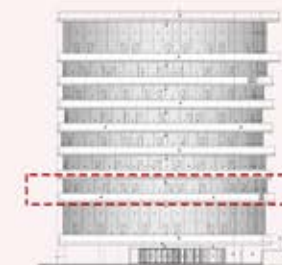
Internal Living Area	468.77 sq.ft.
Outdoor Living Area	61.78 sq.ft.
Total Living Area	530.55 sq.ft.



KEY PLAN



KEY ELEVATION



DISCLAIMER:

All measurements are indicative and are for marketing purposes only. All efforts have been made to ensure their accuracy, however these layouts are subject to change at the discretion of the developer and should not be relied upon as final. The actual area may vary from the stated area and the developer reserves the right to make the revisions/alterations, at its absolute discretion, without any liability whatsoever.

UNIT - 302

STUDIO

LEVEL-03

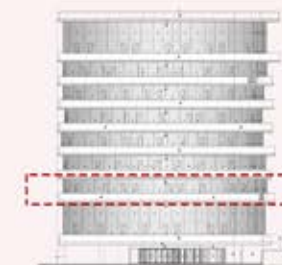
Internal Living Area	511.72 sq.ft.
Outdoor Living Area	49.08 sq.ft.
Total Living Area	560.80 sq.ft.



KEY PLAN



KEY ELEVATION



DISCLAIMER:

All measurements are indicative and are for marketing purposes only. All efforts have been made to ensure their accuracy, however these layouts are subject to change at the discretion of the developer and should not be relied upon as final. The actual area may vary from the stated area and the developer reserves the right to make the revisions/alterations, at its absolute discretion, without any liability whatsoever.



UNIT - 303

1 BEDROOM

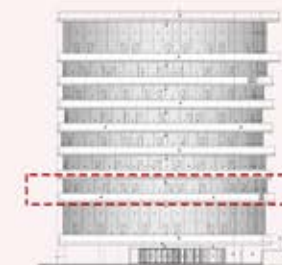
LEVEL-03

Internal Living Area	1162.93 sq.ft.
Outdoor Living Area	300.42 sq.ft.
Total Living Area	1463.35 sq.ft.

KEY PLAN



KEY ELEVATION



DISCLAIMER:

All measurements are indicative and are for marketing purposes only. All efforts have been made to ensure their accuracy, however these layouts are subject to change at the discretion of the developer and should not be relied upon as final. The actual area may vary from the stated area and the developer reserves the right to make the revisions/alterations, at its absolute discretion, without any liability whatsoever.

UNIT - 304

2 BEDROOM

LEVEL-03

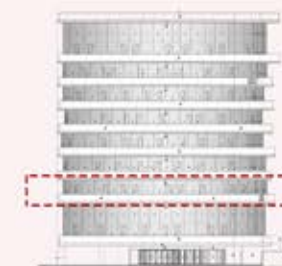
Internal Living Area	1539.13 sq.ft.
Outdoor Living Area	241.87 sq.ft.
Total Living Area	1781.00 sq.ft.



KEY PLAN



KEY ELEVATION



DISCLAIMER:

All measurements are indicative and are for marketing purposes only. All efforts have been made to ensure their accuracy, however these layouts are subject to change at the discretion of the developer and should not be relied upon as final. The actual area may vary from the stated area and the developer reserves the right to make the revisions/alterations, at its absolute discretion, without any liability whatsoever.

UNIT - 305

STUDIO

LEVEL-03

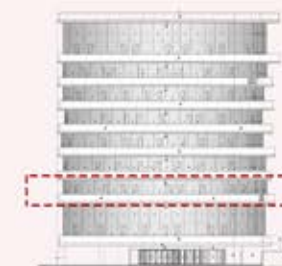
Internal Living Area	582.11 sq.ft.
Outdoor Living Area	59.42 sq.ft.
Total Living Area	641.53 sq.ft.



KEY PLAN



KEY ELEVATION



DISCLAIMER:

All measurements are indicative and are for marketing purposes only. All efforts have been made to ensure their accuracy, however these layouts are subject to change at the discretion of the developer and should not be relied upon as final. The actual area may vary from the stated area and the developer reserves the right to make the revisions/alterations, at its absolute discretion, without any liability whatsoever.

UNIT - 306

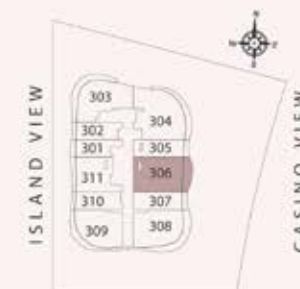
1 BEDROOM

LEVEL-03

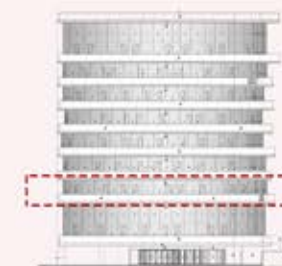
Internal Living Area	1156.58 sq.ft.
Outdoor Living Area	199.99 sq.ft.
Total Living Area	1356.58 sq.ft.



KEY PLAN



KEY ELEVATION



DISCLAIMER:

All measurements are indicative and are for marketing purposes only. All efforts have been made to ensure their accuracy, however these layouts are subject to change at the discretion of the developer and should not be relied upon as final. The actual area may vary from the stated area and the developer reserves the right to make the revisions/alterations, at its absolute discretion, without any liability whatsoever.

UNIT - 307

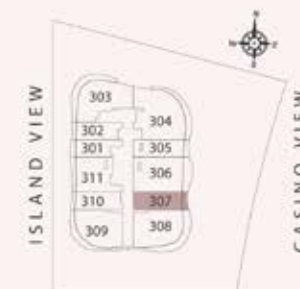
STUDIO

LEVEL-03

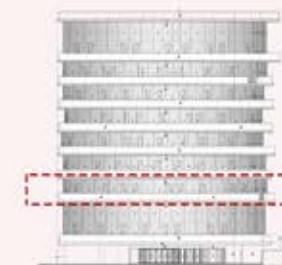
Internal Living Area	577.70 sq.ft.
Outdoor Living Area	63.29 sq.ft.
Total Living Area	640.99 sq.ft.



KEY PLAN



KEY ELEVATION



DISCLAIMER:

All measurements are indicative and are for marketing purposes only. All efforts have been made to ensure their accuracy, however these layouts are subject to change at the discretion of the developer and should not be relied upon as final. The actual area may vary from the stated area and the developer reserves the right to make the revisions/alterations, at its absolute discretion, without any liability whatsoever.



UNIT - 308

1 BEDROOM

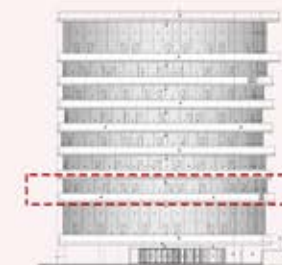
LEVEL-03

Internal Living Area	1143.23 sq.ft.
Outdoor Living Area	344.77 sq.ft.
Total Living Area	1488.00 sq.ft.

KEY PLAN



KEY ELEVATION



DISCLAIMER:

All measurements are indicative and are for marketing purposes only. All efforts have been made to ensure their accuracy, however these layouts are subject to change at the discretion of the developer and should not be relied upon as final. The actual area may vary from the stated area and the developer reserves the right to make the revisions/alterations, at its absolute discretion, without any liability whatsoever.



UNIT - 309

1 BEDROOM

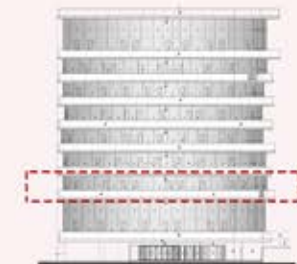
LEVEL-03

Internal Living Area	1065.41 sq.ft.
Outdoor Living Area	244.45 sq.ft.
Total Living Area	1309.86 sq.ft.

KEY PLAN



KEY ELEVATION



DISCLAIMER:

All measurements are indicative and are for marketing purposes only. All efforts have been made to ensure their accuracy, however these layouts are subject to change at the discretion of the developer and should not be relied upon as final. The actual area may vary from the stated area and the developer reserves the right to make the revisions/alterations, at its absolute discretion, without any liability whatsoever.

UNIT - 310

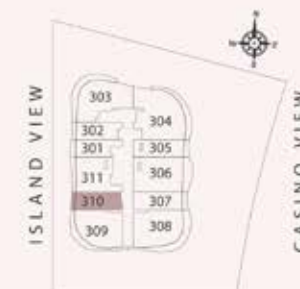
STUDIO

LEVEL-03

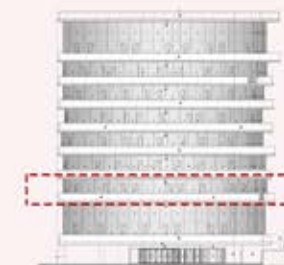
Internal Living Area	545.51 sq.ft.
Outdoor Living Area	45.32 sq.ft.
Total Living Area	590.83 sq.ft.



KEY PLAN



KEY ELEVATION



DISCLAIMER:

All measurements are indicative and are for marketing purposes only. All efforts have been made to ensure their accuracy, however these layouts are subject to change at the discretion of the developer and should not be relied upon as final. The actual area may vary from the stated area and the developer reserves the right to make the revisions/alterations, at its absolute discretion, without any liability whatsoever.

UNIT - 311

1 BEDROOM

LEVEL-03

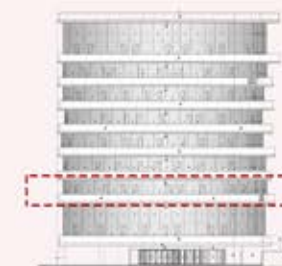
Internal Living Area	888.56 sq.ft.
Outdoor Living Area	100.32 sq.ft.
Total Living Area	988.88 sq.ft.



KEY PLAN



KEY ELEVATION



DISCLAIMER:

All measurements are indicative and are for marketing purposes only. All efforts have been made to ensure their accuracy, however these layouts are subject to change at the discretion of the developer and should not be relied upon as final. The actual area may vary from the stated area and the developer reserves the right to make the revisions/alterations, at its absolute discretion, without any liability whatsoever.



Level 4

UNIT - 401

STUDIO

LEVEL-04

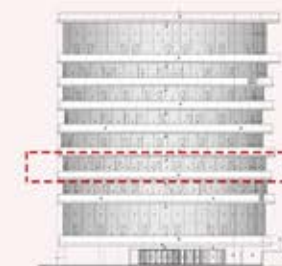
Internal Living Area	453.91 sq.ft.
Outdoor Living Area	73.84 sq.ft.
Total Living Area	527.75 sq.ft.



KEY PLAN



KEY ELEVATION



DISCLAIMER:

All measurements are indicative and are for marketing purposes only. All efforts have been made to ensure their accuracy, however these layouts are subject to change at the discretion of the developer and should not be relied upon as final. The actual area may vary from the stated area and the developer reserves the right to make the revisions/alterations, at its absolute discretion, without any liability whatsoever.

UNIT - 402

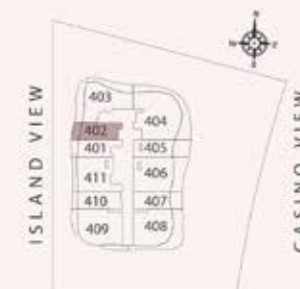
STUDIO

LEVEL-04

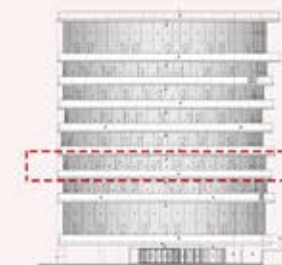
Internal Living Area	466.08 sq.ft.
Outdoor Living Area	98.60 sq.ft.
Total Living Area	564.67 sq.ft.



KEY PLAN



KEY ELEVATION



DISCLAIMER:

All measurements are indicative and are for marketing purposes only. All efforts have been made to ensure their accuracy, however these layouts are subject to change at the discretion of the developer and should not be relied upon as final. The actual area may vary from the stated area and the developer reserves the right to make the revisions/alterations, at its absolute discretion, without any liability whatsoever.

UNIT - 403

1 BEDROOM

LEVEL-04

Internal Living Area	885.33 sq.ft.
Outdoor Living Area	435.08 sq.ft.
Total Living Area	1320.41 sq.ft.



KEY PLAN



KEY ELEVATION



DISCLAIMER:

All measurements are indicative and are for marketing purposes only. All efforts have been made to ensure their accuracy, however these layouts are subject to change at the discretion of the developer and should not be relied upon as final. The actual area may vary from the stated area and the developer reserves the right to make the revisions/alterations, at its absolute discretion, without any liability whatsoever.

UNIT - 404

2 BEDROOM

LEVEL-04

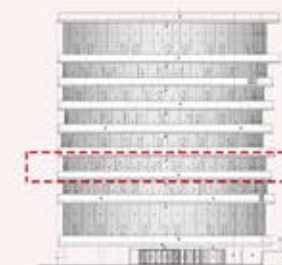
Internal Living Area	1390.27 sq.ft.
Outdoor Living Area	450.15 sq.ft.
Total Living Area	1840.41 sq.ft.



KEY PLAN



KEY ELEVATION



DISCLAIMER:

All measurements are indicative and are for marketing purposes only. All efforts have been made to ensure their accuracy, however these layouts are subject to change at the discretion of the developer and should not be relied upon as final. The actual area may vary from the stated area and the developer reserves the right to make the revisions/alterations, at its absolute discretion, without any liability whatsoever.

UNIT - 405

STUDIO

LEVEL-04

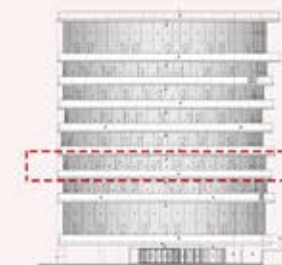
Internal Living Area	461.88 sq.ft.
Outdoor Living Area	205.27 sq.ft.
Total Living Area	667.15 sq.ft.



KEY PLAN



KEY ELEVATION



DISCLAIMER:

All measurements are indicative and are for marketing purposes only. All efforts have been made to ensure their accuracy, however these layouts are subject to change at the discretion of the developer and should not be relied upon as final. The actual area may vary from the stated area and the developer reserves the right to make the revisions/alterations, at its absolute discretion, without any liability whatsoever.

UNIT - 406

1 BEDROOM

LEVEL-04

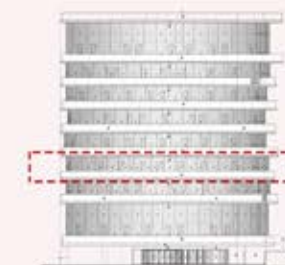
Internal Living Area	938.40 sq.ft.
Outdoor Living Area	292.02 sq.ft.
Total Living Area	1230.42 sq.ft.



KEY PLAN



KEY ELEVATION



DISCLAIMER:

All measurements are indicative and are for marketing purposes only. All efforts have been made to ensure their accuracy, however these layouts are subject to change at the discretion of the developer and should not be relied upon as final. The actual area may vary from the stated area and the developer reserves the right to make the revisions/alterations, at its absolute discretion, without any liability whatsoever.

UNIT - 407

STUDIO

LEVEL-04

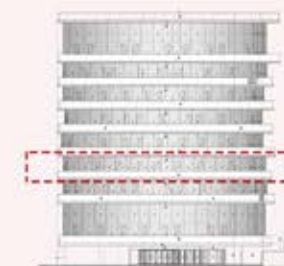
Internal Living Area	443.47 sq.ft.
Outdoor Living Area	141.33 sq.ft.
Total Living Area	584.80 sq.ft.



KEY PLAN



KEY ELEVATION



DISCLAIMER:

All measurements are indicative and are for marketing purposes only. All efforts have been made to ensure their accuracy, however these layouts are subject to change at the discretion of the developer and should not be relied upon as final. The actual area may vary from the stated area and the developer reserves the right to make the revisions/alterations, at its absolute discretion, without any liability whatsoever.

UNIT - 408

1 BEDROOM

LEVEL-04

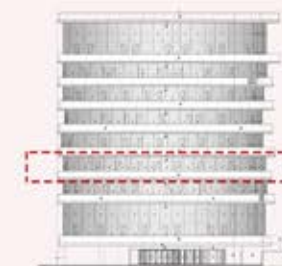
Internal Living Area	934.52 sq.ft.
Outdoor Living Area	423.13 sq.ft.
Total Living Area	1357.65 sq.ft.



KEY PLAN



KEY ELEVATION



DISCLAIMER:

All measurements are indicative and are for marketing purposes only. All efforts have been made to ensure their accuracy, however these layouts are subject to change at the discretion of the developer and should not be relied upon as final. The actual area may vary from the stated area and the developer reserves the right to make the revisions/alterations, at its absolute discretion, without any liability whatsoever.



UNIT- 409

1 BEDROOM

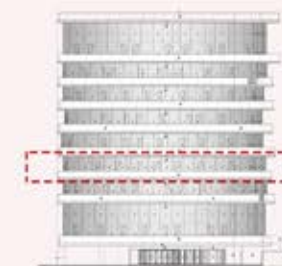
LEVEL-04

Internal Living Area	1050.34 sq.ft.
Outdoor Living Area	181.05 sq.ft.
Total Living Area	1231.39 sq.ft.

KEY PLAN



KEY ELEVATION



DISCLAIMER:

All measurements are indicative and are for marketing purposes only. All efforts have been made to ensure their accuracy, however these layouts are subject to change at the discretion of the developer and should not be relied upon as final. The actual area may vary from the stated area and the developer reserves the right to make the revisions/alterations, at its absolute discretion, without any liability whatsoever.

UNIT - 410

STUDIO

LEVEL-04

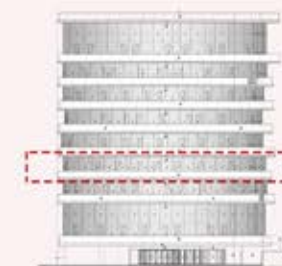
Internal Living Area	529.91 sq.ft.
Outdoor Living Area	59.74 sq.ft.
Total Living Area	589.65 sq.ft.



KEY PLAN



KEY ELEVATION



DISCLAIMER:

All measurements are indicative and are for marketing purposes only. All efforts have been made to ensure their accuracy, however these layouts are subject to change at the discretion of the developer and should not be relied upon as final. The actual area may vary from the stated area and the developer reserves the right to make the revisions/alterations, at its absolute discretion, without any liability whatsoever.



UNIT- 411

1 BEDROOM

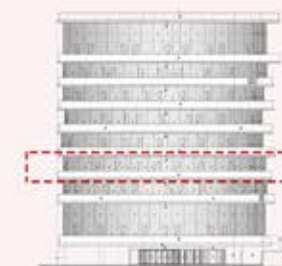
LEVEL-04

Internal Living Area	881.67 sq.ft.
Outdoor Living Area	102.47 sq.ft.
Total Living Area	984.14 sq.ft.

KEY PLAN



KEY ELEVATION



DISCLAIMER:

All measurements are indicative and are for marketing purposes only. All efforts have been made to ensure their accuracy, however these layouts are subject to change at the discretion of the developer and should not be relied upon as final. The actual area may vary from the stated area and the developer reserves the right to make the revisions/alterations, at its absolute discretion, without any liability whatsoever.



Level 5

UNIT - 501

STUDIO

LEVEL-05

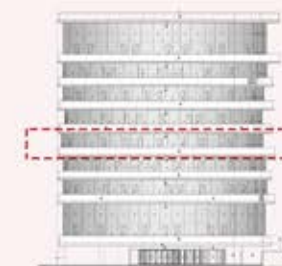
Internal Living Area	459.30 sq.ft.
Outdoor Living Area	50.48 sq.ft.
Total Living Area	509.78 sq.ft.



KEY PLAN



KEY ELEVATION



DISCLAIMER:

All measurements are indicative and are for marketing purposes only. All efforts have been made to ensure their accuracy, however these layouts are subject to change at the discretion of the developer and should not be relied upon as final. The actual area may vary from the stated area and the developer reserves the right to make the revisions/alterations, at its absolute discretion, without any liability whatsoever.

UNIT - 502

STUDIO

LEVEL-05

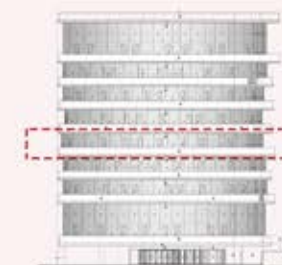
Internal Living Area	488.90 sq.ft.
Outdoor Living Area	70.40 sq.ft.
Total Living Area	559.29 sq.ft.



KEY PLAN



KEY ELEVATION



DISCLAIMER:

All measurements are indicative and are for marketing purposes only. All efforts have been made to ensure their accuracy, however these layouts are subject to change at the discretion of the developer and should not be relied upon as final. The actual area may vary from the stated area and the developer reserves the right to make the revisions/alterations, at its absolute discretion, without any liability whatsoever.



UNIT - 503

1 BEDROOM

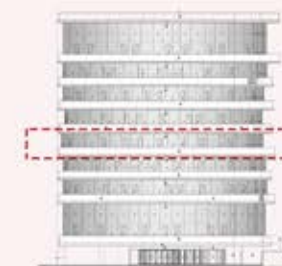
LEVEL-05

Internal Living Area	1016.87 sq.ft.
Outdoor Living Area	448.86 sq.ft.
Total Living Area	1465.72 sq.ft.

KEY PLAN



KEY ELEVATION



DISCLAIMER:

All measurements are indicative and are for marketing purposes only. All efforts have been made to ensure their accuracy, however these layouts are subject to change at the discretion of the developer and should not be relied upon as final. The actual area may vary from the stated area and the developer reserves the right to make the revisions/alterations, at its absolute discretion, without any liability whatsoever.

UNIT - 504

2 BEDROOM

LEVEL-05

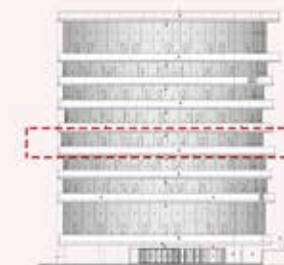
Internal Living Area	1491.34 sq.ft.
Outdoor Living Area	364.25 sq.ft.
Total Living Area	1855.59 sq.ft.



KEY PLAN



KEY ELEVATION



DISCLAIMER:

All measurements are indicative and are for marketing purposes only. All efforts have been made to ensure their accuracy, however these layouts are subject to change at the discretion of the developer and should not be relied upon as final. The actual area may vary from the stated area and the developer reserves the right to make the revisions/alterations, at its absolute discretion, without any liability whatsoever.

UNIT - 505

STUDIO

LEVEL-05

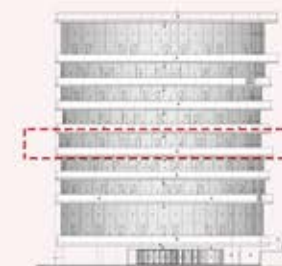
Internal Living Area	500.09 sq.ft.
Outdoor Living Area	106.78 sq.ft.
Total Living Area	606.87 sq.ft.



KEY PLAN



KEY ELEVATION



DISCLAIMER:

All measurements are indicative and are for marketing purposes only. All efforts have been made to ensure their accuracy, however these layouts are subject to change at the discretion of the developer and should not be relied upon as final. The actual area may vary from the stated area and the developer reserves the right to make the revisions/alterations, at its absolute discretion, without any liability whatsoever.

UNIT - 506

1 BEDROOM

LEVEL-05

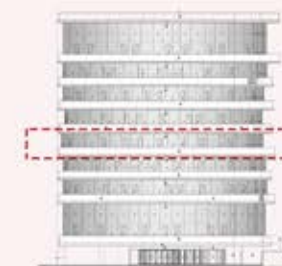
Internal Living Area	1117.19 sq.ft.
Outdoor Living Area	198.06 sq.ft.
Total Living Area	1315.24 sq.ft.



KEY PLAN



KEY ELEVATION



DISCLAIMER:

All measurements are indicative and are for marketing purposes only. All efforts have been made to ensure their accuracy, however these layouts are subject to change at the discretion of the developer and should not be relied upon as final. The actual area may vary from the stated area and the developer reserves the right to make the revisions/alterations, at its absolute discretion, without any liability whatsoever.

UNIT - 507

STUDIO

LEVEL-05

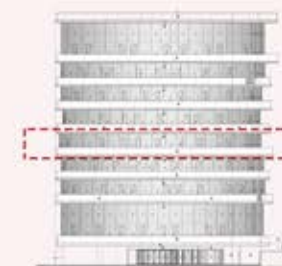
Internal Living Area	538.84 sq.ft.
Outdoor Living Area	74.49 sq.ft.
Total Living Area	613.33 sq.ft.



KEY PLAN



KEY ELEVATION



DISCLAIMER:

All measurements are indicative and are for marketing purposes only. All efforts have been made to ensure their accuracy, however these layouts are subject to change at the discretion of the developer and should not be relied upon as final. The actual area may vary from the stated area and the developer reserves the right to make the revisions/alterations, at its absolute discretion, without any liability whatsoever.

UNIT - 508

1 BEDROOM

LEVEL-05

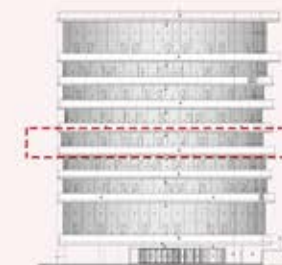
Internal Living Area	1121.06 sq.ft.
Outdoor Living Area	376.52 sq.ft.
Total Living Area	1497.58 sq.ft.



KEY PLAN



KEY ELEVATION



DISCLAIMER:

All measurements are indicative and are for marketing purposes only. All efforts have been made to ensure their accuracy, however these layouts are subject to change at the discretion of the developer and should not be relied upon as final. The actual area may vary from the stated area and the developer reserves the right to make the revisions/alterations, at its absolute discretion, without any liability whatsoever.



UNIT- 509

1 BEDROOM

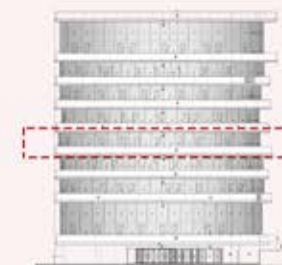
LEVEL-05

Internal Living Area	1051.85 sq.ft.
Outdoor Living Area	186.43 sq.ft.
Total Living Area	1238.28 sq.ft.

KEY PLAN



KEY ELEVATION



DISCLAIMER:

All measurements are indicative and are for marketing purposes only. All efforts have been made to ensure their accuracy, however these layouts are subject to change at the discretion of the developer and should not be relied upon as final. The actual area may vary from the stated area and the developer reserves the right to make the revisions/alterations, at its absolute discretion, without any liability whatsoever.



UNIT - 510

STUDIO

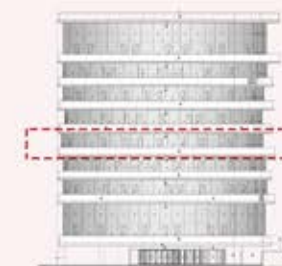
LEVEL-05

Internal Living Area	542.39 sq.ft.
Outdoor Living Area	60.92 sq.ft.
Total Living Area	603.32 sq.ft.

KEY PLAN



KEY ELEVATION



DISCLAIMER:

All measurements are indicative and are for marketing purposes only. All efforts have been made to ensure their accuracy, however these layouts are subject to change at the discretion of the developer and should not be relied upon as final. The actual area may vary from the stated area and the developer reserves the right to make the revisions/alterations, at its absolute discretion, without any liability whatsoever.

UNIT- 511

1 BEDROOM

LEVEL-05

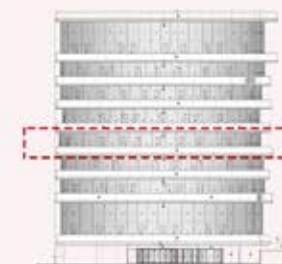
Internal Living Area	897.39 sq.ft.
Outdoor Living Area	118.73 sq.ft.
Total Living Area	1016.11 sq.ft.



KEY PLAN



KEY ELEVATION



DISCLAIMER:

All measurements are indicative and are for marketing purposes only. All efforts have been made to ensure their accuracy, however these layouts are subject to change at the discretion of the developer and should not be relied upon as final. The actual area may vary from the stated area and the developer reserves the right to make the revisions/alterations, at its absolute discretion, without any liability whatsoever.



Level 6

UNIT - 601

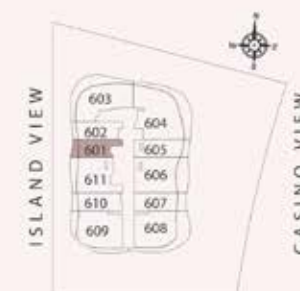
STUDIO

LEVEL-06

Internal Living Area	433.79 sq.ft.
Outdoor Living Area	73.63 sq.ft.
Total Living Area	507.41 sq.ft.



KEY PLAN



KEY ELEVATION



DISCLAIMER:

All measurements are indicative and are for marketing purposes only. All efforts have been made to ensure their accuracy, however these layouts are subject to change at the discretion of the developer and should not be relied upon as final. The actual area may vary from the stated area and the developer reserves the right to make the revisions/alterations, at its absolute discretion, without any liability whatsoever.

UNIT - 602

STUDIO

LEVEL-06

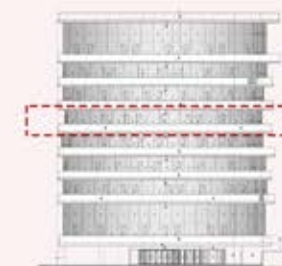
Internal Living Area	498.69 sq.ft.
Outdoor Living Area	53.07 sq.ft.
Total Living Area	551.76 sq.ft.



KEY PLAN



KEY ELEVATION



DISCLAIMER:

All measurements are indicative and are for marketing purposes only. All efforts have been made to ensure their accuracy, however these layouts are subject to change at the discretion of the developer and should not be relied upon as final. The actual area may vary from the stated area and the developer reserves the right to make the revisions/alterations, at its absolute discretion, without any liability whatsoever.



UNIT - 603

1 BEDROOM

LEVEL-06

Internal Living Area	1030.54 sq.ft.
Outdoor Living Area	424.31 sq.ft.
Total Living Area	1454.85 sq.ft.

KEY PLAN



KEY ELEVATION



DISCLAIMER:

All measurements are indicative and are for marketing purposes only. All efforts have been made to ensure their accuracy, however these layouts are subject to change at the discretion of the developer and should not be relied upon as final. The actual area may vary from the stated area and the developer reserves the right to make the revisions/alterations, at its absolute discretion, without any liability whatsoever.

UNIT - 604

2 BEDROOM

LEVEL-06

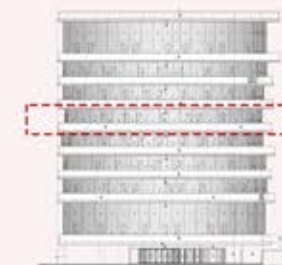
Internal Living Area	1403.51 sq.ft.
Outdoor Living Area	427.43 sq.ft.
Total Living Area	1830.94 sq.ft.



KEY PLAN



KEY ELEVATION



DISCLAIMER:

All measurements are indicative and are for marketing purposes only. All efforts have been made to ensure their accuracy, however these layouts are subject to change at the discretion of the developer and should not be relied upon as final. The actual area may vary from the stated area and the developer reserves the right to make the revisions/alterations, at its absolute discretion, without any liability whatsoever.

UNIT - 605

STUDIO

LEVEL-06

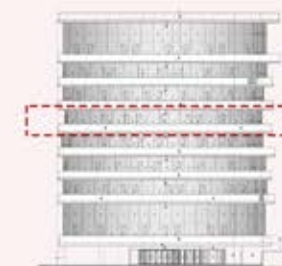
Internal Living Area	553.37 sq.ft.
Outdoor Living Area	73.52 sq.ft.
Total Living Area	626.89 sq.ft.



KEY PLAN



KEY ELEVATION



DISCLAIMER:

All measurements are indicative and are for marketing purposes only. All efforts have been made to ensure their accuracy, however these layouts are subject to change at the discretion of the developer and should not be relied upon as final. The actual area may vary from the stated area and the developer reserves the right to make the revisions/alterations, at its absolute discretion, without any liability whatsoever.

UNIT - 606

1 BEDROOM

LEVEL-06

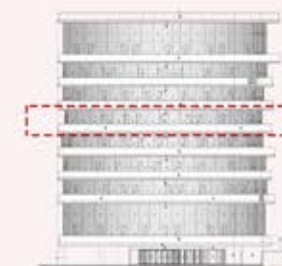
Internal Living Area	989.20 sq.ft.
Outdoor Living Area	265.44 sq.ft.
Total Living Area	1254.64 sq.ft.



KEY PLAN



KEY ELEVATION



DISCLAIMER:

All measurements are indicative and are for marketing purposes only. All efforts have been made to ensure their accuracy, however these layouts are subject to change at the discretion of the developer and should not be relied upon as final. The actual area may vary from the stated area and the developer reserves the right to make the revisions/alterations, at its absolute discretion, without any liability whatsoever.

UNIT - 607

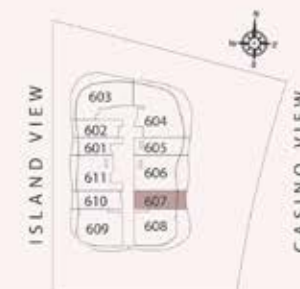
STUDIO

LEVEL-06

Internal Living Area	507.52 sq.ft.
Outdoor Living Area	105.27 sq.ft.
Total Living Area	612.79 sq.ft.



KEY PLAN



KEY ELEVATION



DISCLAIMER:

All measurements are indicative and are for marketing purposes only. All efforts have been made to ensure their accuracy, however these layouts are subject to change at the discretion of the developer and should not be relied upon as final. The actual area may vary from the stated area and the developer reserves the right to make the revisions/alterations, at its absolute discretion, without any liability whatsoever.



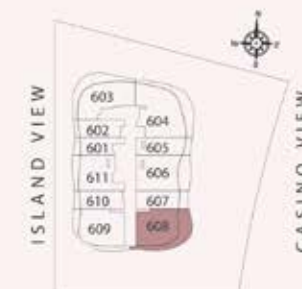
UNIT - 608

1 BEDROOM

LEVEL-06

Internal Living Area	955.84 sq.ft.
Outdoor Living Area	444.33 sq.ft.
Total Living Area	1400.17 sq.ft.

KEY PLAN



KEY ELEVATION



DISCLAIMER:

All measurements are indicative and are for marketing purposes only. All efforts have been made to ensure their accuracy, however these layouts are subject to change at the discretion of the developer and should not be relied upon as final. The actual area may vary from the stated area and the developer reserves the right to make the revisions/alterations, at its absolute discretion, without any liability whatsoever.



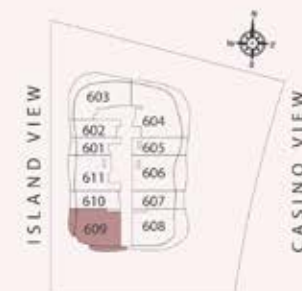
UNIT - 609

1 BEDROOM

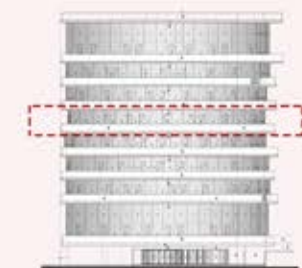
LEVEL-06

Internal Living Area	1038.29 sq.ft.
Outdoor Living Area	224.32 sq.ft.
Total Living Area	1262.61 sq.ft.

KEY PLAN



KEY ELEVATION



DISCLAIMER:

All measurements are indicative and are for marketing purposes only. All efforts have been made to ensure their accuracy, however these layouts are subject to change at the discretion of the developer and should not be relied upon as final. The actual area may vary from the stated area and the developer reserves the right to make the revisions/alterations, at its absolute discretion, without any liability whatsoever.

UNIT - 610

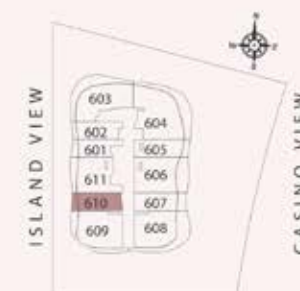
STUDIO

LEVEL-06

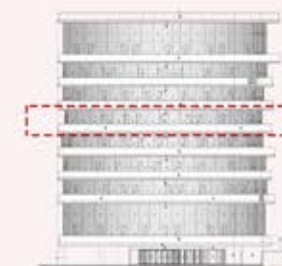
Internal Living Area	513.33	sq.ft.
Outdoor Living Area	64.37	sq.ft.
Total Living Area	577.70	sq.ft.



KEY PLAN



KEY ELEVATION



DISCLAIMER:

All measurements are indicative and are for marketing purposes only. All efforts have been made to ensure their accuracy, however these layouts are subject to change at the discretion of the developer and should not be relied upon as final. The actual area may vary from the stated area and the developer reserves the right to make the revisions/alterations, at its absolute discretion, without any liability whatsoever.

UNIT - 611

1 BEDROOM

LEVEL-06

Internal Living Area	850.03 sq.ft.
Outdoor Living Area	147.79 sq.ft.
Total Living Area	997.81 sq.ft.



KEY PLAN



KEY ELEVATION



DISCLAIMER:

All measurements are indicative and are for marketing purposes only. All efforts have been made to ensure their accuracy, however these layouts are subject to change at the discretion of the developer and should not be relied upon as final. The actual area may vary from the stated area and the developer reserves the right to make the revisions/alterations, at its absolute discretion, without any liability whatsoever.



Level 7

UNIT - 701

STUDIO

LEVEL-07

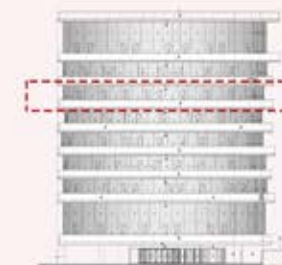
Internal Living Area	433.79 sq.ft.
Outdoor Living Area	71.26 sq.ft.
Total Living Area	505.04 sq.ft.



KEY PLAN



KEY ELEVATION



DISCLAIMER:

All measurements are indicative and are for marketing purposes only. All efforts have been made to ensure their accuracy, however these layouts are subject to change at the discretion of the developer and should not be relied upon as final. The actual area may vary from the stated area and the developer reserves the right to make the revisions/alterations, at its absolute discretion, without any liability whatsoever.

UNIT - 702

STUDIO

LEVEL-07

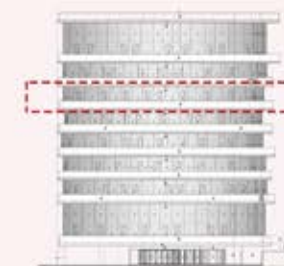
Internal Living Area	458.87 sq.ft.
Outdoor Living Area	80.94 sq.ft.
Total Living Area	539.81 sq.ft.



KEY PLAN



KEY ELEVATION



DISCLAIMER:

All measurements are indicative and are for marketing purposes only. All efforts have been made to ensure their accuracy, however these layouts are subject to change at the discretion of the developer and should not be relied upon as final. The actual area may vary from the stated area and the developer reserves the right to make the revisions/alterations, at its absolute discretion, without any liability whatsoever.



UNIT - 703

1 BEDROOM

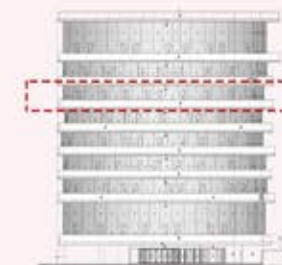
LEVEL-07

Internal Living Area	1055.51 sq.ft.
Outdoor Living Area	369.96 sq.ft.
Total Living Area	1425.46 sq.ft.

KEY PLAN



KEY ELEVATION



DISCLAIMER:

All measurements are indicative and are for marketing purposes only. All efforts have been made to ensure their accuracy, however these layouts are subject to change at the discretion of the developer and should not be relied upon as final. The actual area may vary from the stated area and the developer reserves the right to make the revisions/alterations, at its absolute discretion, without any liability whatsoever.

UNIT - 704

2 BEDROOM

LEVEL-07

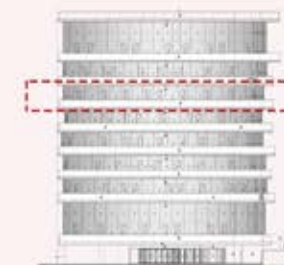
Internal Living Area	1414.70 sq.ft.
Outdoor Living Area	389.55 sq.ft.
Total Living Area	1804.25 sq.ft.



KEY PLAN



KEY ELEVATION



DISCLAIMER:

All measurements are indicative and are for marketing purposes only. All efforts have been made to ensure their accuracy, however these layouts are subject to change at the discretion of the developer and should not be relied upon as final. The actual area may vary from the stated area and the developer reserves the right to make the revisions/alterations, at its absolute discretion, without any liability whatsoever.

UNIT - 705

STUDIO

LEVEL-07

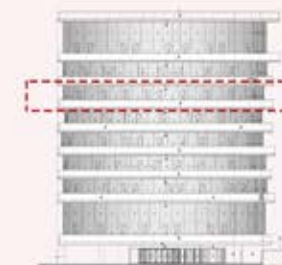
Internal Living Area	510.32 sq.ft.
Outdoor Living Area	113.13 sq.ft.
Total Living Area	623.45 sq.ft.



KEY PLAN



KEY ELEVATION



DISCLAIMER:

All measurements are indicative and are for marketing purposes only. All efforts have been made to ensure their accuracy, however these layouts are subject to change at the discretion of the developer and should not be relied upon as final. The actual area may vary from the stated area and the developer reserves the right to make the revisions/alterations, at its absolute discretion, without any liability whatsoever.

UNIT - 706

1 BEDROOM

LEVEL-07

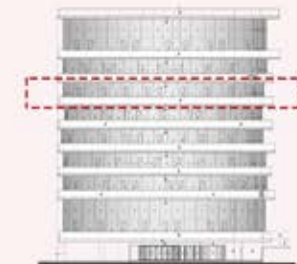
Internal Living Area	1139.68 sq.ft.
Outdoor Living Area	166.52 sq.ft.
Total Living Area	1306.20 sq.ft.



KEY PLAN



KEY ELEVATION



DISCLAIMER:

All measurements are indicative and are for marketing purposes only. All efforts have been made to ensure their accuracy, however these layouts are subject to change at the discretion of the developer and should not be relied upon as final. The actual area may vary from the stated area and the developer reserves the right to make the revisions/alterations, at its absolute discretion, without any liability whatsoever.

UNIT - 707

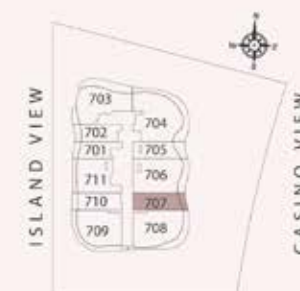
STUDIO

LEVEL-07

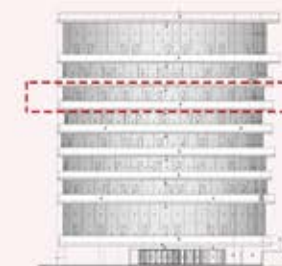
Internal Living Area	575.55 sq.ft.
Outdoor Living Area	72.76 sq.ft.
Total Living Area	648.31 sq.ft.



KEY PLAN



KEY ELEVATION



DISCLAIMER:

All measurements are indicative and are for marketing purposes only. All efforts have been made to ensure their accuracy, however these layouts are subject to change at the discretion of the developer and should not be relied upon as final. The actual area may vary from the stated area and the developer reserves the right to make the revisions/alterations, at its absolute discretion, without any liability whatsoever.

UNIT - 708

1 BEDROOM

LEVEL-07

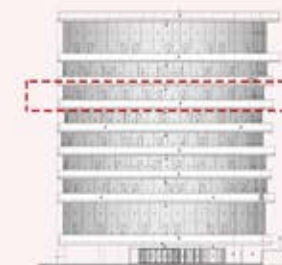
Internal Living Area	1160.78 sq.ft.
Outdoor Living Area	300.10 sq.ft.
Total Living Area	1460.88 sq.ft.



KEY PLAN



KEY ELEVATION



DISCLAIMER:

All measurements are indicative and are for marketing purposes only. All efforts have been made to ensure their accuracy, however these layouts are subject to change at the discretion of the developer and should not be relied upon as final. The actual area may vary from the stated area and the developer reserves the right to make the revisions/alterations, at its absolute discretion, without any liability whatsoever.



UNIT - 709

1 BEDROOM

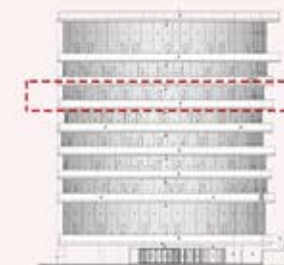
LEVEL-07

Internal Living Area	1046.47 sq.ft.
Outdoor Living Area	257.26 sq.ft.
Total Living Area	1303.72 sq.ft.

KEY PLAN



KEY ELEVATION



DISCLAIMER:

All measurements are indicative and are for marketing purposes only. All efforts have been made to ensure their accuracy, however these layouts are subject to change at the discretion of the developer and should not be relied upon as final. The actual area may vary from the stated area and the developer reserves the right to make the revisions/alterations, at its absolute discretion, without any liability whatsoever.

UNIT - 710

STUDIO

LEVEL-07

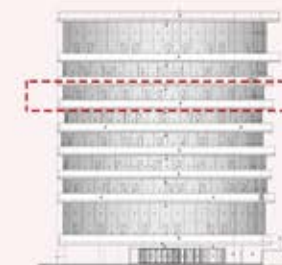
Internal Living Area	531.63 sq.ft.
Outdoor Living Area	63.72 sq.ft.
Total Living Area	595.35 sq.ft.



KEY PLAN



KEY ELEVATION



DISCLAIMER:

All measurements are indicative and are for marketing purposes only. All efforts have been made to ensure their accuracy, however these layouts are subject to change at the discretion of the developer and should not be relied upon as final. The actual area may vary from the stated area and the developer reserves the right to make the revisions/alterations, at its absolute discretion, without any liability whatsoever.

UNIT - 711

1 BEDROOM

LEVEL-07

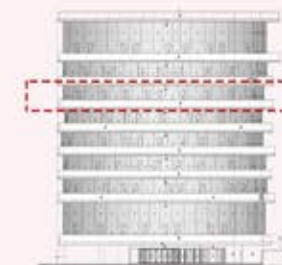
Internal Living Area	889.64 sq.ft.
Outdoor Living Area	96.55 sq.ft.
Total Living Area	986.19 sq.ft.



KEY PLAN



KEY ELEVATION



DISCLAIMER:

All measurements are indicative and are for marketing purposes only. All efforts have been made to ensure their accuracy, however these layouts are subject to change at the discretion of the developer and should not be relied upon as final. The actual area may vary from the stated area and the developer reserves the right to make the revisions/alterations, at its absolute discretion, without any liability whatsoever.

Level 8



UNIT - 801

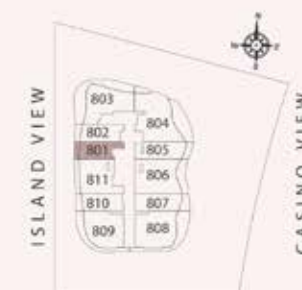
STUDIO

LEVEL-08

Internal Living Area	457.14 sq.ft.
Outdoor Living Area	55.76 sq.ft.
Total Living Area	512.90 sq.ft.



KEY PLAN



KEY ELEVATION



DISCLAIMER:

All measurements are indicative and are for marketing purposes only. All efforts have been made to ensure their accuracy, however these layouts are subject to change at the discretion of the developer and should not be relied upon as final. The actual area may vary from the stated area and the developer reserves the right to make the revisions/alterations, at its absolute discretion, without any liability whatsoever.

UNIT - 802

STUDIO

LEVEL-08

Internal Living Area	482.65 sq.ft.
Outdoor Living Area	70.29 sq.ft.
Total Living Area	552.94 sq.ft.



KEY PLAN



KEY ELEVATION



DISCLAIMER:

All measurements are indicative and are for marketing purposes only. All efforts have been made to ensure their accuracy, however these layouts are subject to change at the discretion of the developer and should not be relied upon as final. The actual area may vary from the stated area and the developer reserves the right to make the revisions/alterations, at its absolute discretion, without any liability whatsoever.

UNIT - 803

1 BEDROOM

LEVEL-08

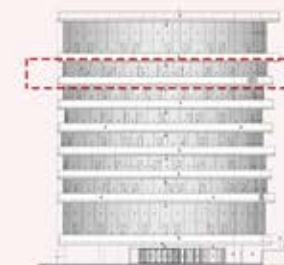
Internal Living Area	932.37 sq.ft.
Outdoor Living Area	561.12 sq.ft.
Total Living Area	1493.49 sq.ft.



KEY PLAN



KEY ELEVATION



DISCLAIMER:

All measurements are indicative and are for marketing purposes only. All efforts have been made to ensure their accuracy, however these layouts are subject to change at the discretion of the developer and should not be relied upon as final. The actual area may vary from the stated area and the developer reserves the right to make the revisions/alterations, at its absolute discretion, without any liability whatsoever.

UNIT - 804

2 BEDROOM

LEVEL-08

Internal Living Area	1231.71 sq.ft.
Outdoor Living Area	428.83 sq.ft.
Total Living Area	1660.55 sq.ft.



KEY PLAN



KEY ELEVATION



DISCLAIMER:

All measurements are indicative and are for marketing purposes only. All efforts have been made to ensure their accuracy, however these layouts are subject to change at the discretion of the developer and should not be relied upon as final. The actual area may vary from the stated area and the developer reserves the right to make the revisions/alterations, at its absolute discretion, without any liability whatsoever.

UNIT - 805

STUDIO

LEVEL-08

Internal Living Area	584.37 sq.ft.
Outdoor Living Area	80.62 sq.ft.
Total Living Area	664.99 sq.ft.



KEY PLAN



KEY ELEVATION



DISCLAIMER:

All measurements are indicative and are for marketing purposes only. All efforts have been made to ensure their accuracy, however these layouts are subject to change at the discretion of the developer and should not be relied upon as final. The actual area may vary from the stated area and the developer reserves the right to make the revisions/alterations, at its absolute discretion, without any liability whatsoever.

UNIT - 806

1 BEDROOM

LEVEL-08

Internal Living Area	1040.33 sq.ft.
Outdoor Living Area	197.41 sq.ft.
Total Living Area	1237.74 sq.ft.



KEY PLAN



KEY ELEVATION



DISCLAIMER:

All measurements are indicative and are for marketing purposes only. All efforts have been made to ensure their accuracy, however these layouts are subject to change at the discretion of the developer and should not be relied upon as final. The actual area may vary from the stated area and the developer reserves the right to make the revisions/alterations, at its absolute discretion, without any liability whatsoever.



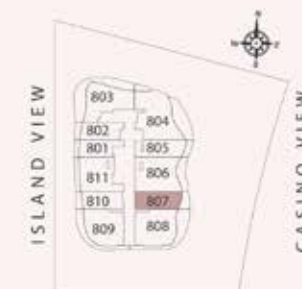
UNIT - 807

STUDIO

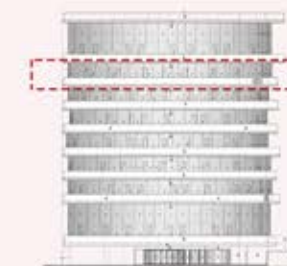
LEVEL-08

Internal Living Area	555.31 sq.ft.
Outdoor Living Area	104.30 sq.ft.
Total Living Area	659.61 sq.ft.

KEY PLAN



KEY ELEVATION



DISCLAIMER:

All measurements are indicative and are for marketing purposes only. All efforts have been made to ensure their accuracy, however these layouts are subject to change at the discretion of the developer and should not be relied upon as final. The actual area may vary from the stated area and the developer reserves the right to make the revisions/alterations, at its absolute discretion, without any liability whatsoever.



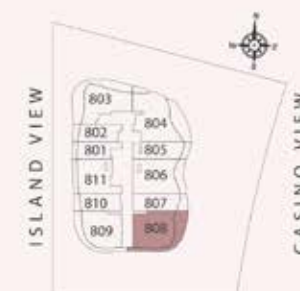
UNIT - 808

1 BEDROOM

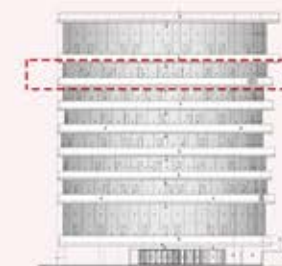
LEVEL-08

Internal Living Area	1019.99 sq.ft.
Outdoor Living Area	379.43 sq.ft.
Total Living Area	1399.42 sq.ft.

KEY PLAN



KEY ELEVATION



DISCLAIMER:

All measurements are indicative and are for marketing purposes only. All efforts have been made to ensure their accuracy, however these layouts are subject to change at the discretion of the developer and should not be relied upon as final. The actual area may vary from the stated area and the developer reserves the right to make the revisions/alterations, at its absolute discretion, without any liability whatsoever.



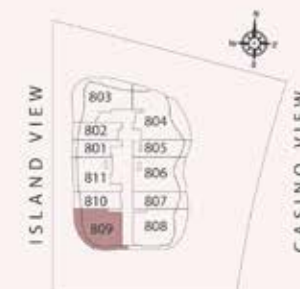
UNIT - 809

1 BEDROOM

LEVEL-08

Internal Living Area	926.23 sq.ft.
Outdoor Living Area	283.41 sq.ft.
Total Living Area	1209.65 sq.ft.

KEY PLAN



KEY ELEVATION



DISCLAIMER:

All measurements are indicative and are for marketing purposes only. All efforts have been made to ensure their accuracy, however these layouts are subject to change at the discretion of the developer and should not be relied upon as final. The actual area may vary from the stated area and the developer reserves the right to make the revisions/alterations, at its absolute discretion, without any liability whatsoever.

UNIT - 810

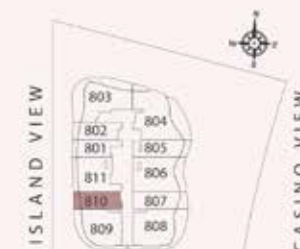
STUDIO

LEVEL-08

Internal Living Area	492.13 sq.ft.
Outdoor Living Area	79.87 sq.ft.
Total Living Area	571.99 sq.ft.



KEY PLAN



KEY ELEVATION



DISCLAIMER:

All measurements are indicative and are for marketing purposes only. All efforts have been made to ensure their accuracy, however these layouts are subject to change at the discretion of the developer and should not be relied upon as final. The actual area may vary from the stated area and the developer reserves the right to make the revisions/alterations, at its absolute discretion, without any liability whatsoever.

UNIT - 811

1 BEDROOM

LEVEL-08

Internal Living Area	859.18 sq.ft.
Outdoor Living Area	113.34 sq.ft.
Total Living Area	972.52 sq.ft.



KEY PLAN



KEY ELEVATION



DISCLAIMER:

All measurements are indicative and are for marketing purposes only. All efforts have been made to ensure their accuracy, however these layouts are subject to change at the discretion of the developer and should not be relied upon as final. The actual area may vary from the stated area and the developer reserves the right to make the revisions/alterations, at its absolute discretion, without any liability whatsoever.



Level 9



UNIT - 901

2 BEDROOM + MAID

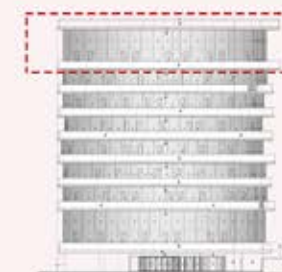
LEVEL-09

Internal Living Area	1506.41 sq.ft.
Outdoor Living Area	123.46 sq.ft.
Total Living Area	1629.87 sq.ft.

KEY PLAN



KEY ELEVATION



DISCLAIMER:

All measurements are indicative and are for marketing purposes only. All efforts have been made to ensure their accuracy, however these layouts are subject to change at the discretion of the developer and should not be relied upon as final. The actual area may vary from the stated area and the developer reserves the right to make the revisions/alterations, at its absolute discretion, without any liability whatsoever.



UPPER FLOOR



LOWER FLOOR

UNIT - 902

1 BEDROOM

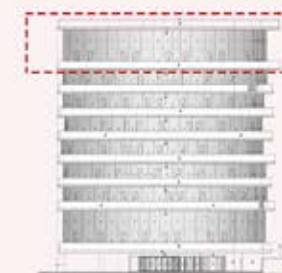
LEVEL-09

Internal Living Area	881.56 sq.ft.
Outdoor Living Area	73.95 sq.ft.
Total Living Area	955.51 sq.ft.

KEY PLAN



KEY ELEVATION



DISCLAIMER:

All measurements are indicative and are for marketing purposes only. All efforts have been made to ensure their accuracy, however these layouts are subject to change at the discretion of the developer and should not be relied upon as final. The actual area may vary from the stated area and the developer reserves the right to make the revisions/alterations, at its absolute discretion, without any liability whatsoever.



UNIT - 903

3 BEDROOM

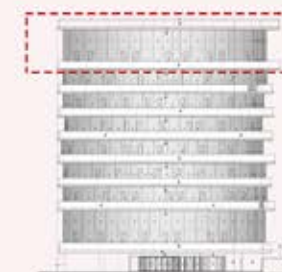
LEVEL-09

Internal Living Area	1973.89 sq.ft.
Outdoor Living Area	341.75 sq.ft.
Total Living Area	2315.64 sq.ft.

KEY PLAN



KEY ELEVATION



DISCLAIMER:

All measurements are indicative and are for marketing purposes only. All efforts have been made to ensure their accuracy, however these layouts are subject to change at the discretion of the developer and should not be relied upon as final. The actual area may vary from the stated area and the developer reserves the right to make the revisions/alterations, at its absolute discretion, without any liability whatsoever.



UPPER FLOOR



LOWER FLOOR

UNIT - 904

3 BEDROOM

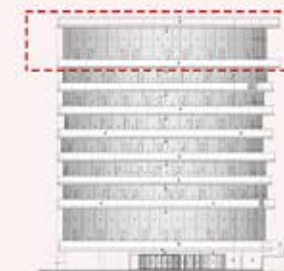
LEVEL-09

Internal Living Area	1609.96 sq.ft.
Outdoor Living Area	332.71 sq.ft.
Total Living Area	1942.67 sq.ft.

KEY PLAN



KEY ELEVATION



DISCLAIMER:

All measurements are indicative and are for marketing purposes only. All efforts have been made to ensure their accuracy, however these layouts are subject to change at the discretion of the developer and should not be relied upon as final. The actual area may vary from the stated area and the developer reserves the right to make the revisions/alterations, at its absolute discretion, without any liability whatsoever.



UPPER FLOOR

UNIT - 905

2 BEDROOM

LEVEL-09

Internal Living Area	1761.41 sq.ft.
Outdoor Living Area	237.56 sq.ft.
Total Living Area	1998.97 sq.ft.

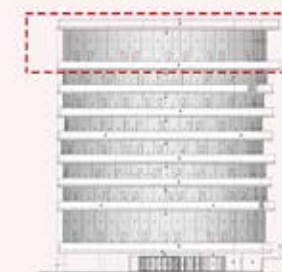


LOWER FLOOR

KEY PLAN



KEY ELEVATION



DISCLAIMER:

All measurements are indicative and are for marketing purposes only. All efforts have been made to ensure their accuracy, however these layouts are subject to change at the discretion of the developer and should not be relied upon as final. The actual area may vary from the stated area and the developer reserves the right to make the revisions/alterations, at its absolute discretion, without any liability whatsoever.



UPPER FLOOR



LOWER FLOOR

UNIT - 906

2 BEDROOM + MAID

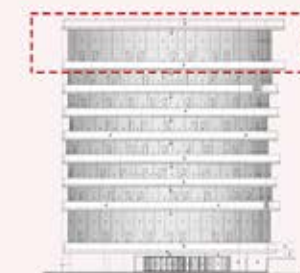
LEVEL-09

Internal Living Area	1593.17 sq.ft.
Outdoor Living Area	310.86 sq.ft.
Total Living Area	1904.03 sq.ft.

KEY PLAN



KEY ELEVATION



DISCLAIMER:

All measurements are indicative and are for marketing purposes only. All efforts have been made to ensure their accuracy, however these layouts are subject to change at the discretion of the developer and should not be relied upon as final. The actual area may vary from the stated area and the developer reserves the right to make the revisions/alterations, at its absolute discretion, without any liability whatsoever.



UPPER FLOOR

UNIT - 907

1 BEDROOM

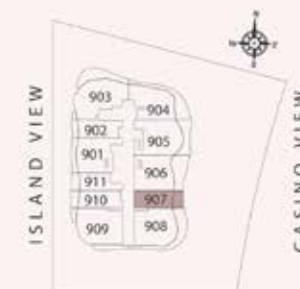
LEVEL-09

Internal Living Area	811.60 sq.ft.
Outdoor Living Area	124.32 sq.ft.
Total Living Area	935.92 sq.ft.

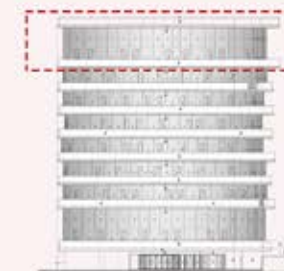


LOWER FLOOR

KEY PLAN



KEY ELEVATION



DISCLAIMER:

All measurements are indicative and are for marketing purposes only. All efforts have been made to ensure their accuracy, however these layouts are subject to change at the discretion of the developer and should not be relied upon as final. The actual area may vary from the stated area and the developer reserves the right to make the revisions/alterations, at its absolute discretion, without any liability whatsoever.



UPPER FLOOR



LOWER FLOOR

UNIT - 908

3 BEDROOM

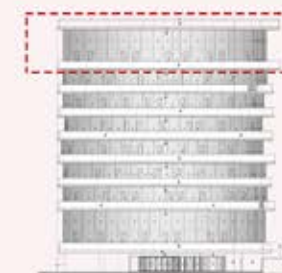
LEVEL-09

Internal Living Area	1866.78sq.ft.
Outdoor Living Area	356.72sq.ft.
Total Living Area	2223.50sq.ft.

KEY PLAN



KEY ELEVATION



DISCLAIMER:

All measurements are indicative and are for marketing purposes only. All efforts have been made to ensure their accuracy, however these layouts are subject to change at the discretion of the developer and should not be relied upon as final. The actual area may vary from the stated area and the developer reserves the right to make the revisions/alterations, at its absolute discretion, without any liability whatsoever.



UPPER FLOOR



UNIT - 909

3 BEDROOM

LEVEL-09

Internal Living Area	1940.30 sq.ft.
Outdoor Living Area	162.86 sq.ft.
Total Living Area	2103.16 sq.ft.



LOWER FLOOR

DISCLAIMER:

All measurements are indicative and are for marketing purposes only. All efforts have been made to ensure their accuracy, however these layouts are subject to change at the discretion of the developer and should not be relied upon as final. The actual area may vary from the stated area and the developer reserves the right to make the revisions/alterations, at its absolute discretion, without any liability whatsoever.



UPPER FLOOR



LOWER FLOOR

UNIT - 910

1 BEDROOM

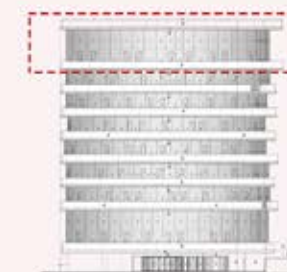
LEVEL-09

Internal Living Area	900.29 sq.ft.
Outdoor Living Area	87.62 sq.ft.
Total Living Area	987.91 sq.ft.

KEY PLAN



KEY ELEVATION



DISCLAIMER:

All measurements are indicative and are for marketing purposes only. All efforts have been made to ensure their accuracy, however these layouts are subject to change at the discretion of the developer and should not be relied upon as final. The actual area may vary from the stated area and the developer reserves the right to make the revisions/alterations, at its absolute discretion, without any liability whatsoever.



UPPER FLOOR



UNIT - 911

1 BEDROOM

LEVEL-09

Internal Living Area	771.34 sq.ft.
Outdoor Living Area	93.00 sq.ft.
Total Living Area	864.34 sq.ft.



LOWER FLOOR

DISCLAIMER:

All measurements are indicative and are for marketing purposes only. All efforts have been made to ensure their accuracy, however these layouts are subject to change at the discretion of the developer and should not be relied upon as final. The actual area may vary from the stated area and the developer reserves the right to make the revisions/alterations, at its absolute discretion, without any liability whatsoever.